

N05-A Wabo-Vergunningsaanvraag

Bijlage 2 Plotplan & Zijaanzichten

december '21

ONE-Dyas B.V.

Parnassusweg 815
1082 LZ Amsterdam
The Netherlands



Date: 23 december 2021

Report No.: N05A-1-82-0-15500-02

Issue No.: 2.0

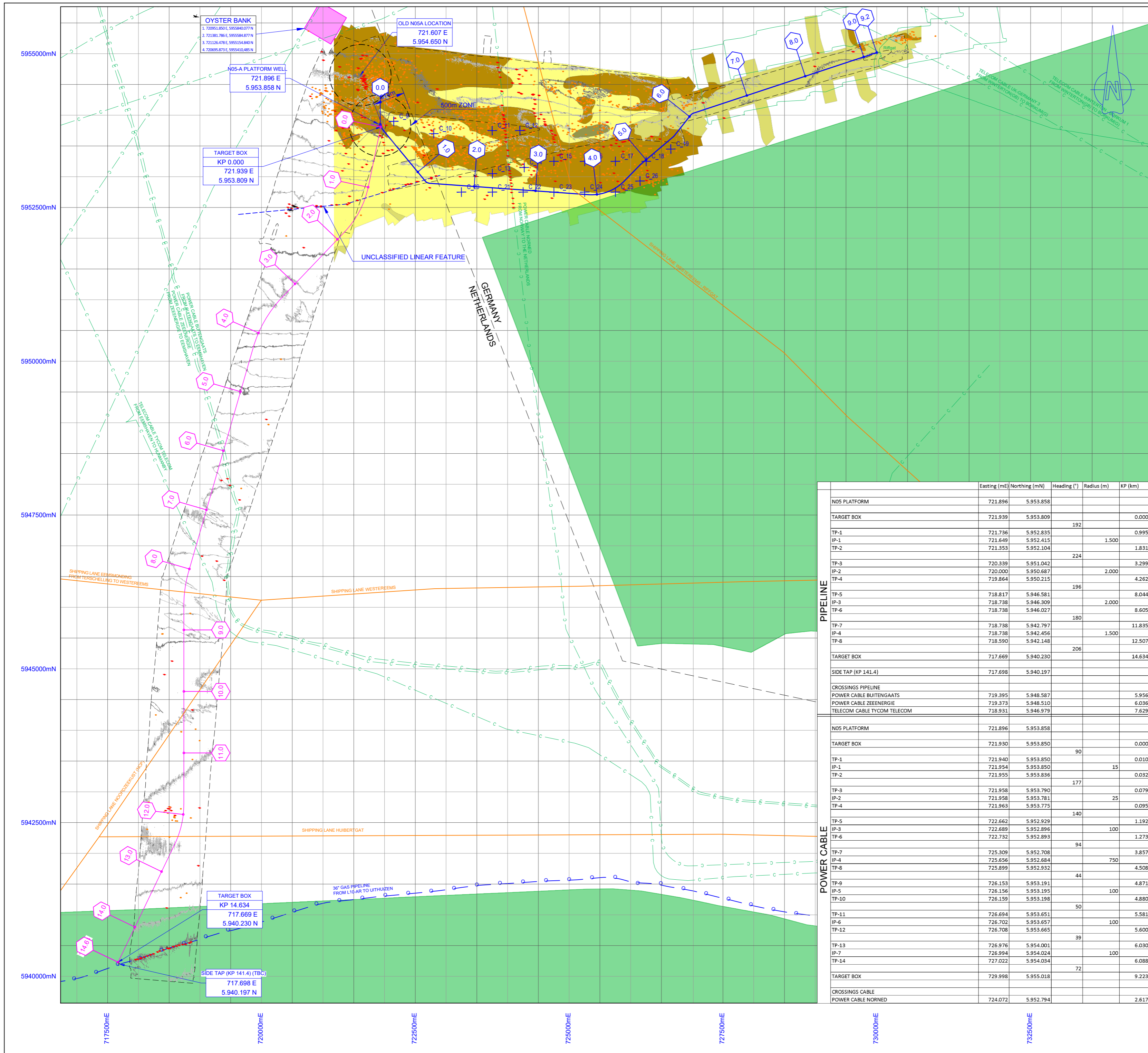
Table of Contents

Table of Contents

- 1 Overall Field Layout
- 2 Platform Plotplans
- 3 Proces Flow Diagrams

1 Overall Field Layout

Pipeline Route - Overall Field Layout aangepast



REFERENCES

- N05A-7-50-0-72050-01/06 Pipeline alignment sheet - Alternative platform location - Buried option - sheet 01-06
 - N05A-7-50-0-72051-01 Alternative platform location - Approach drawing @ N05A
 - N05A-7-50-0-75052-01 Alternative platform location - Approach drawing @ NGT
- GEOnyx
 LU0022H-553_A1_1905_UTM31-ED50_LAT_MB_#0.5
 LU0022H-553_A2_1905_UTM31-ED50_LAT_MB_#0.5 + EXTRA POLYGON
 LU0022H-553_A3_1905_UTM31-ED50_LAT_MB_#0.5 + EXTRA POLYGON
 LU0022H-553_A4_1905_UTM31-ED50_LAT_MB_#0.5
 LU0022H-553_A5_1905_UTM31-ED50_LAT_MB_#0.5
 N05A-7-50-0-72039-01-02 Seabed Features - N05a - Riffgat OWF

LEGEND

- GENERAL**
- 1.0 KILOMETER MARKER
 - PIPELINE: N05A - NGT
 - CABLE: N05A - RIFFGAT
 - BOUNDARY OF SURVEY AREA
 - EXISTING PIPELINE
 - EXISTING CABLE
 - SHIPPING LANE RIJKSWATERSTAAT
 - ROCKDUMP
 - NATURA2000
 - OYSTERBANK
- BATHYMETRY AND SEABED FEATURES**
- 0.5 CONTOUR LINE AT 1m INTERVAL
 - LWdH SONAR CONTACT
 - LWdH DEPRESSION
 - LWdH MOUND
 - AS-FOUND WELLHEAD
 - CP105 CONE PENETRATION TEST
 - VC05 VIBRE CORE
 - 65mT MAGNETIC ANOMALY
 - WRECK
- SEABED CLASSIFICATIONS**
- Infralittoral fine sand (A5.23)
 - Infralittoral coarse sediment (A5.13)
 - Infralittoral coarse sediment (A5.13) with scattered areas of Infralittoral mixed sediment (A5.43)
 - Infralittoral mixed sediment (A5.43)

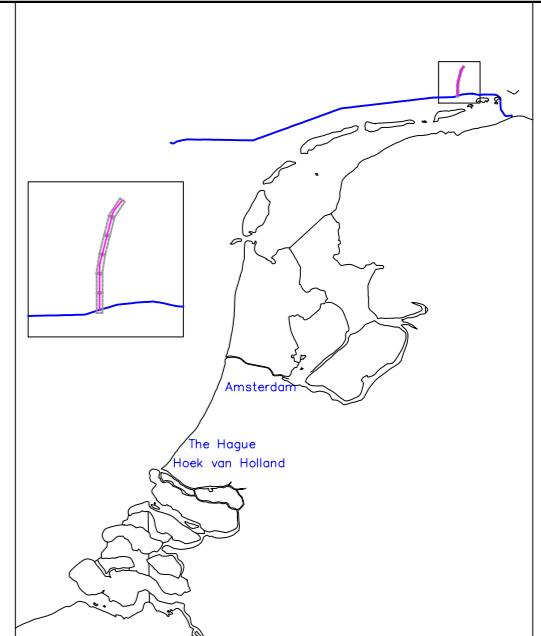
GEODETTIC PARAMETERS

PROJECTED CRS: ED50/UTM zone 31N (EPSG: 23031)

Horizontal Datum Name: European Datum 1950 North Sea -UKCS
 Projection Name: Universal Transverse Mercator

Ellipsoid: International 1924 (Hayford 1909)
 Zone: = North 31
 Central meridian: = 3° East
 Semi major axis a = 6 378 388.000
 Latitude of origin: = Equator
 Semi minor axis b = 6 356 911.946
 False Easting: = 500 000.00 m
 Inverse ELatening 1/f = 297.000
 False Northing: = 0.00 m
 Eccentricity squared e = 0.006 722 670
 Scale factor on C.M.: = 0.999 6

WGS84 to ED50 TRANSFORMATION: UKOAA (EPSG: 1311)



KEYPLAN

Rev	Date	Description	Drawn	Eng.	Check	Appr.	Client
07	21-12-2021	NATURA 2000 ADDED	SvdV	-	-	-	DK
06	15-12-2021	KP NUMBERS ADDED + COORDINATES	SvdV	-	-	-	DK
05	14-12-2021	PIPELINE AND CABLE REROUTED	SvdV	-	-	-	DK
04	22-09-2021	CPT AND VC ADDED/PLT RELOC.	SvdV	-	-	-	DK
03	15-09-2021	PLATFORM LOCATION D ADDED	SvdV	-	-	-	DK

	Eastng (mE)	Northng (mN)	Heading (°)	Radius (m)	KP (km)
PIPELINE					
N05 PLATFORM	721.896	5.953.858			
TARGET BOX	721.939	5.953.809			0.000
TP-1	721.736	5.952.835	192		0.995
IP-1	721.649	5.952.415		1.500	1.831
TP-2	721.353	5.952.104	224		3.299
TP-3	720.339	5.951.042			4.262
IP-2	720.000	5.950.687		2.000	
TP-4	719.864	5.950.215	196		8.044
TP-5	718.817	5.946.581			8.605
IP-3	718.738	5.946.309		2.000	
TP-6	718.738	5.946.027	180		11.835
TP-7	718.738	5.942.797			12.507
IP-4	718.738	5.942.456		1.500	
TP-8	718.590	5.942.148	206		14.634
TARGET BOX	717.669	5.940.230			
SIDE TAP (KP 141.4)	717.698	5.940.197			
CROSSINGS PIPELINE					
POWER CABLE BUITENGAATS	719.395	5.948.587			5.956
POWER CABLE ZEEENERGIE	719.373	5.948.510			6.036
TELECOM CABLE TYCOM TELECOM	718.931	5.946.979			7.629
POWER CABLE					
N05 PLATFORM	721.896	5.953.858			
TARGET BOX	721.930	5.953.850	90		0.010
TP-1	721.940	5.953.850			0.032
IP-1	721.954	5.953.850		15	
TP-2	721.955	5.953.836	177		0.079
TP-3	721.958	5.953.790			0.095
IP-2	721.958	5.953.781		25	
TP-4	721.963	5.953.775	140		1.192
TP-5	722.662	5.952.929			1.273
IP-3	722.689	5.952.896		100	
TP-6	722.732	5.952.893	94		3.857
TP-7	725.309	5.952.708			4.508
IP-4	725.656	5.952.684		750	
TP-8	725.899	5.952.932	44		4.871
TP-9	726.153	5.953.191			4.880
IP-5	726.156	5.953.195		100	
TP-10	726.159	5.953.198	50		5.581
TP-11	726.694	5.953.651			5.600
IP-6	726.702	5.953.657		100	
TP-12	726.708	5.953.665	39		6.030
TP-13	726.976	5.954.001			6.088
IP-7	726.994	5.954.024		100	
TP-14	727.022	5.954.034	72		9.223
TARGET BOX	729.998	5.955.018			
CROSSINGS CABLE					
POWER CABLE NORND	724.072	5.952.794			2.617

enersea
 Jan Evertsenweg 12
 3115 JA Schiedam
 The Netherlands
 +31(0) 103132100
 info@enersea.nl

Client
ONEDyas B.V.

Project
N05-A TO NGT PIPELINE

Document
Pipeline Route - Overall Field Layout
Alternative platform location

one dyas

Scale: **1:30000**
 Size: **A1**

Project number: 19018	Document Number: N05A-7-51-0-72510-02
---------------------------------	---

2 Platform Plotplans

Niet aangepast, daarom niet bijgevoegd

Plot Plan General Arrangement Layout Drawings

Plot Plan Side View Looking South

Plot Plan Side View Looking West

Plot Plan Top View Main Deck and Heli Deck

Plot Plan Heli Deck T.O.B. EL.+37300

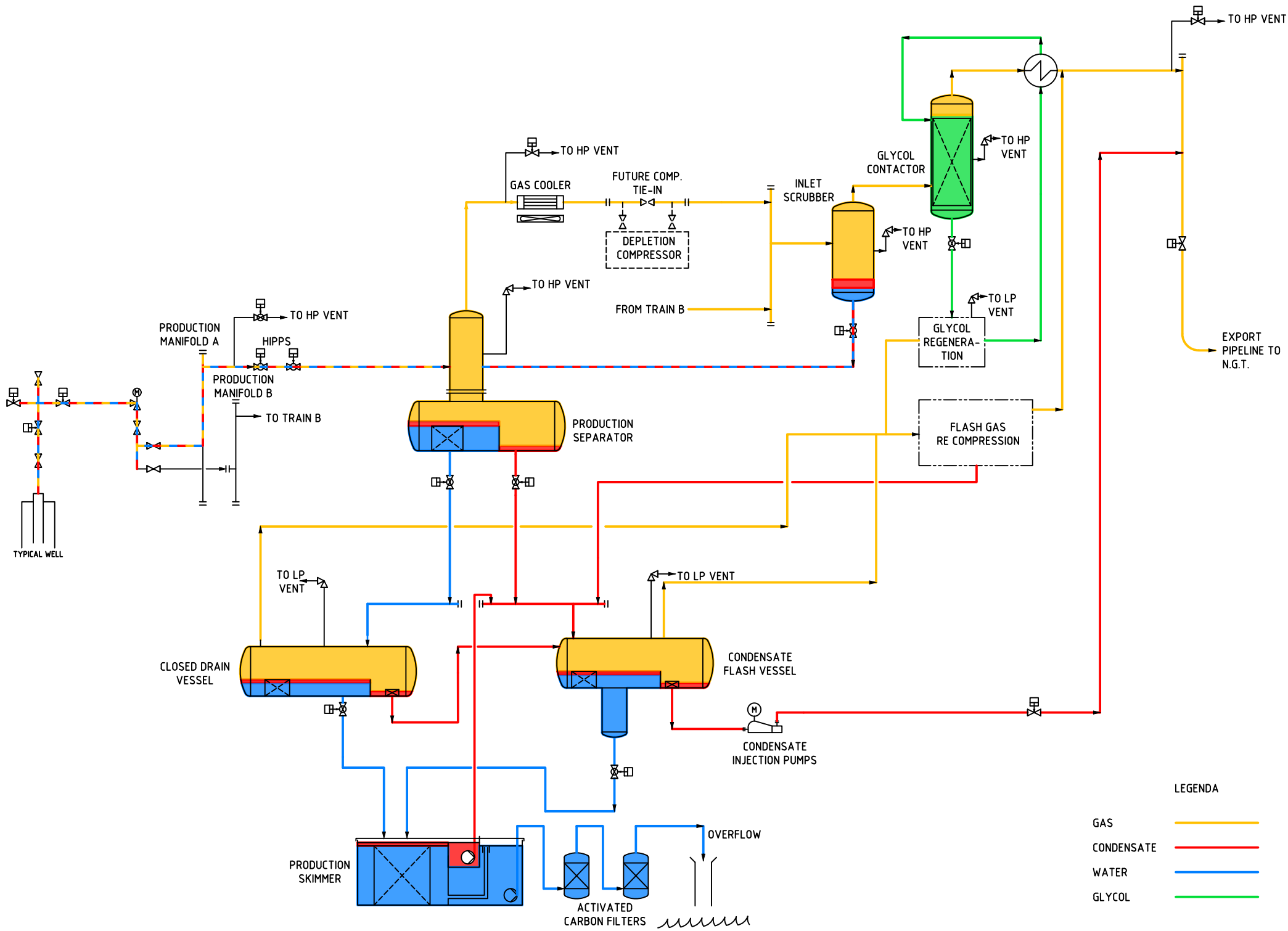
Plot Plan Main Deck T.O.B. EL.+29800

Plot Plan Mezzanine Deck T.O.B. EL.+25800

Plot Plan Cellar Deck T.O.B. EL.+21800

3 Proces Flow Diagrams

Process Flow Diagram - Main Process aangepast



LEGENDA

- GAS —
- CONDENSATE —
- WATER —
- GLYCOL —